

2013 Community Sector Leaders Forum on **Emerging Issues**

4 April, 2013

Presentation 3: Prof John Phillimore



#emergingissues
@WACOSS



Environmental Scan

1. Economic
2. Social
- 3. Political**
4. Sector / Services





THE
JOHN CURTIN INSTITUTE
OF PUBLIC POLICY

Australia's Changing Political Context: A Tale of Two Minority Governments

John Phillimore

Executive Director,

John Curtin Institute of Public Policy (JCIPP)



Curtin University



Outline

1. WA election and its aftermath
2. Federal politics and election in Sept 2013
3. General political observations
4. Social Policy observations



WA Politics

1. Election March 2013
 1. Votes & seats
 2. The future
2. Key issues and people
 - Continuity & focus on NFP reforms
 - Go to: www.wa.liberal.org.au/plans
 - Helen Morton: mental health, disability services, child protection
 - Tony Simpson: community services, seniors, volunteering, youth



Federal Politics

1. Political management problems for ALP
2. Current state of play
 - House of Reps
 - Senate
3. State variations
4. WA: Liberal heartland

House of Reps 2010: Votes & Seats

Party	First preference vote share %	Change from previous election %	Seats won	Seat share %
ALP	38.0	-5.4	72	48.0
Liberal Party	30.4	+0.8	44	29.3
LNP (Qld)	9.1	+0.6	21	14.0
National Party	3.7	+0.2	7	4.7
CLP (NT)	0.3	0.0	1	0.7
Greens	11.8	+4.0	1	0.7
Independents	2.5	+0.3	4	2.7
Family First	2.2	+0.3	0	0
Other	1.9	-		
Totals	100.00		150	100.00

Senate: Seats

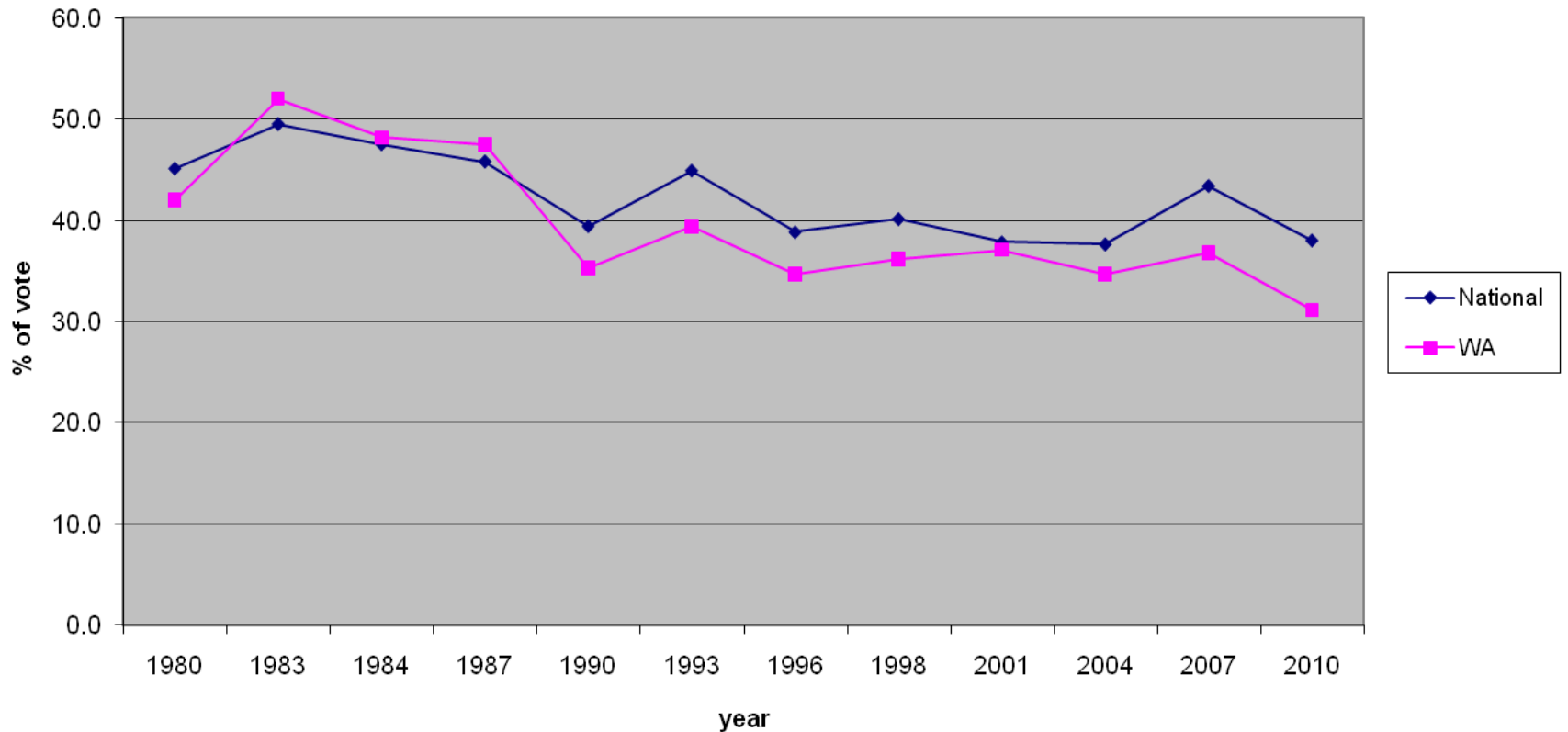
Party	Continuing	Retiring	Total
ALP	13	18	31
Coalition	16	18	34
Greens	6	3	9
Other	1 (DLP)	1 (Xenophon)	2
Total	36	40	76

One Country or Many?

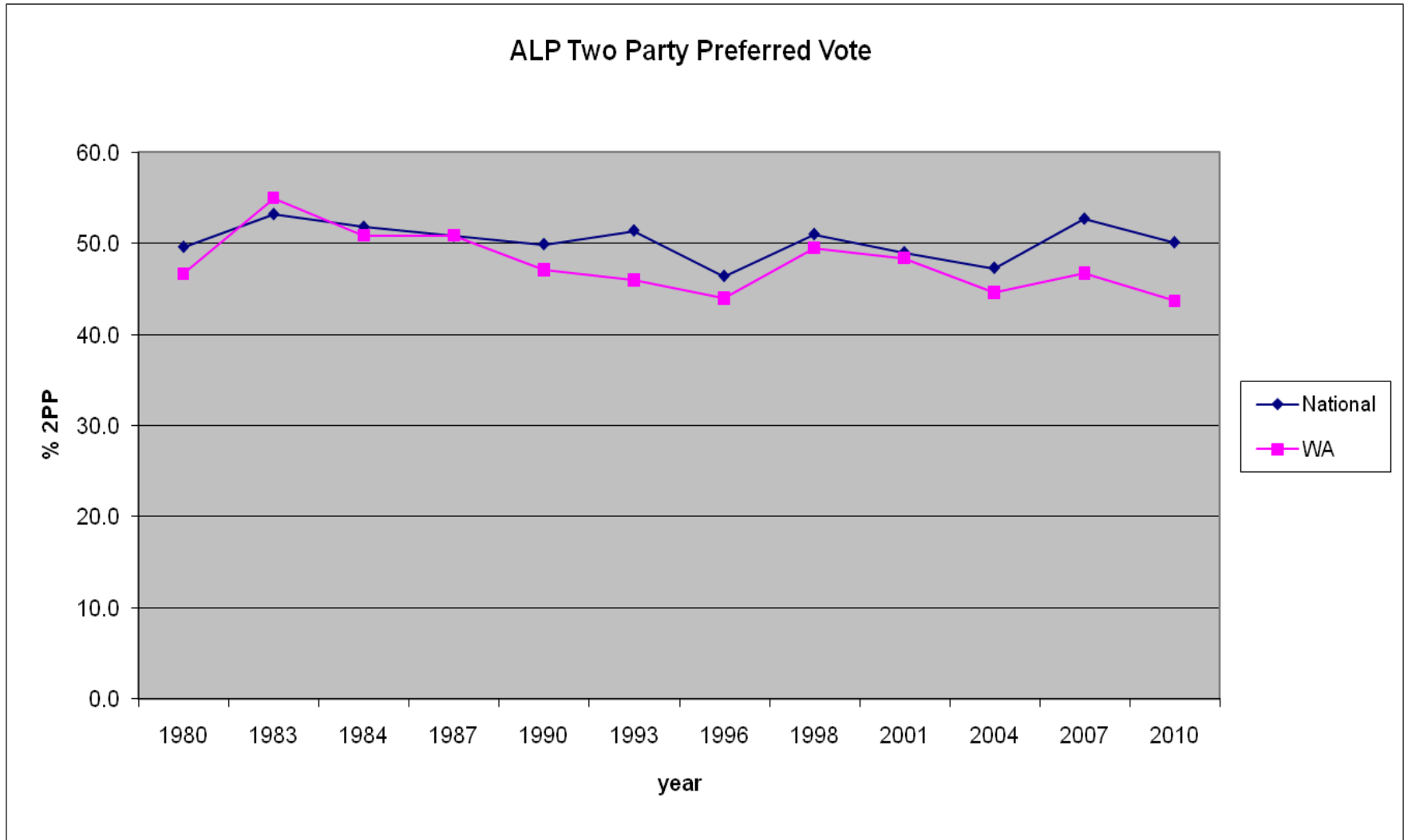
	2PP - % ALP	2PP - % Lib-NP	Seats ALP	Seats Lib-NP	Seats Other
Inner Metro	53.3	46.7	22	16	2
Outer Metro	52.8	47.2	27	21	
Provincial	52.9	47.1	13	7	
Rural	42.7	57.3	10	29	3
Vic, SA, Tas, ACT	55.5	44.5	34	19	2
Qld, WA, NT	44.6	55.4	12	34	1
NSW	48.8	51.2	26	20	2
AUSTRALIA	50.1	49.9	72	73	5

WA v. Aust Federal Primary Vote: ALP

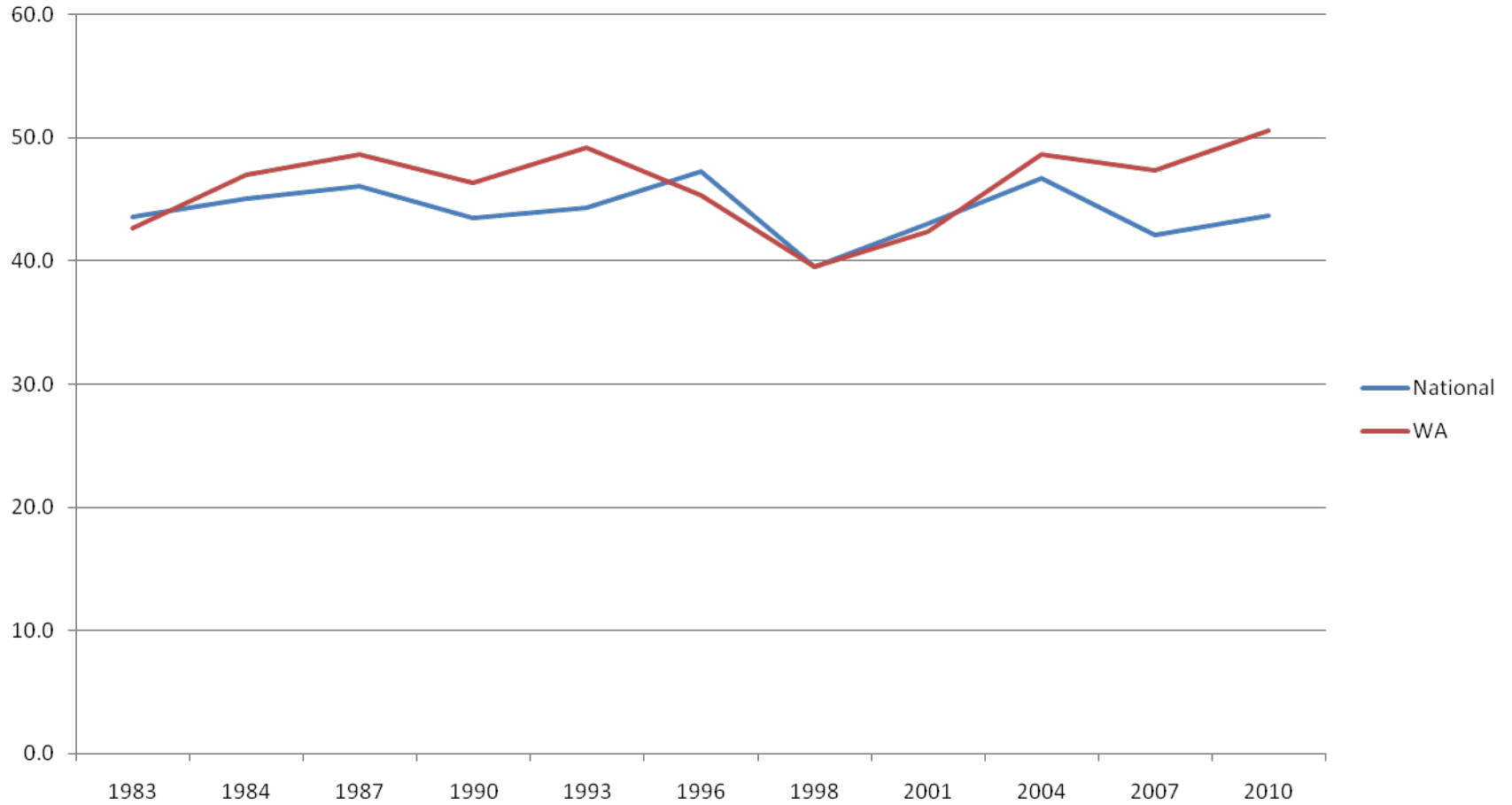
ALP Primary vote



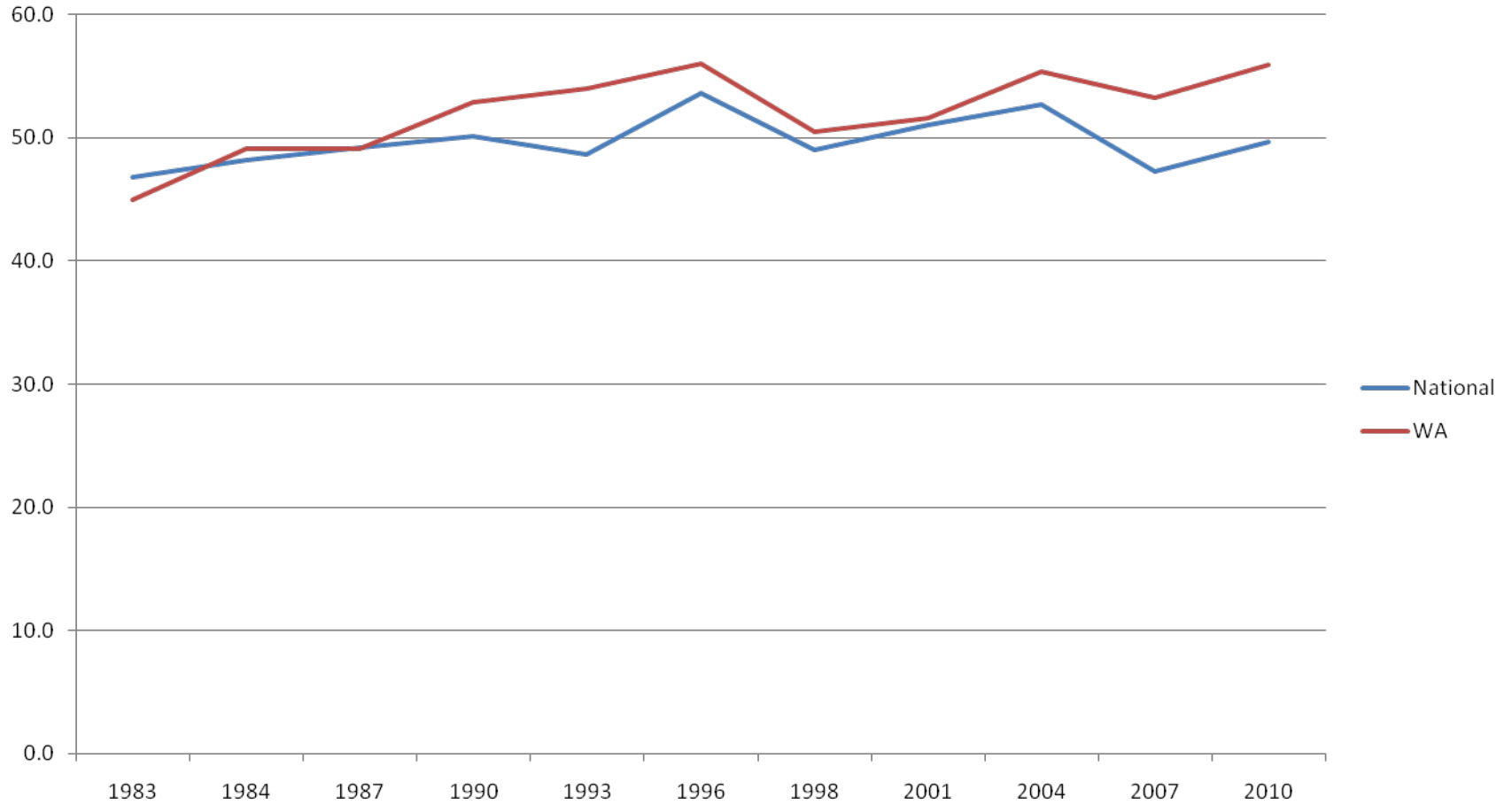
WA v. Aust Federal 2PP Vote: ALP



L-NP – Primary Vote



L-NP – 2PP Vote

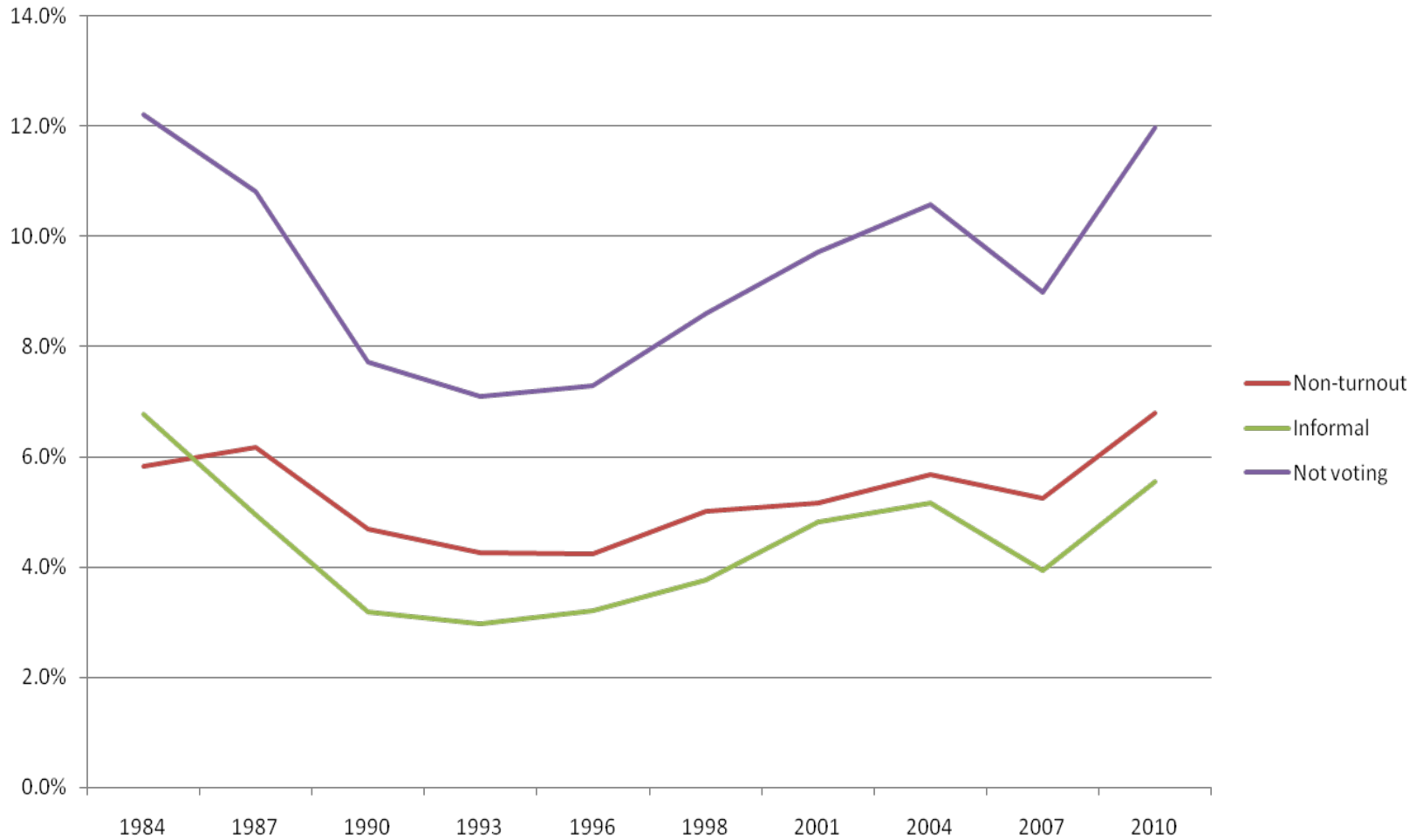




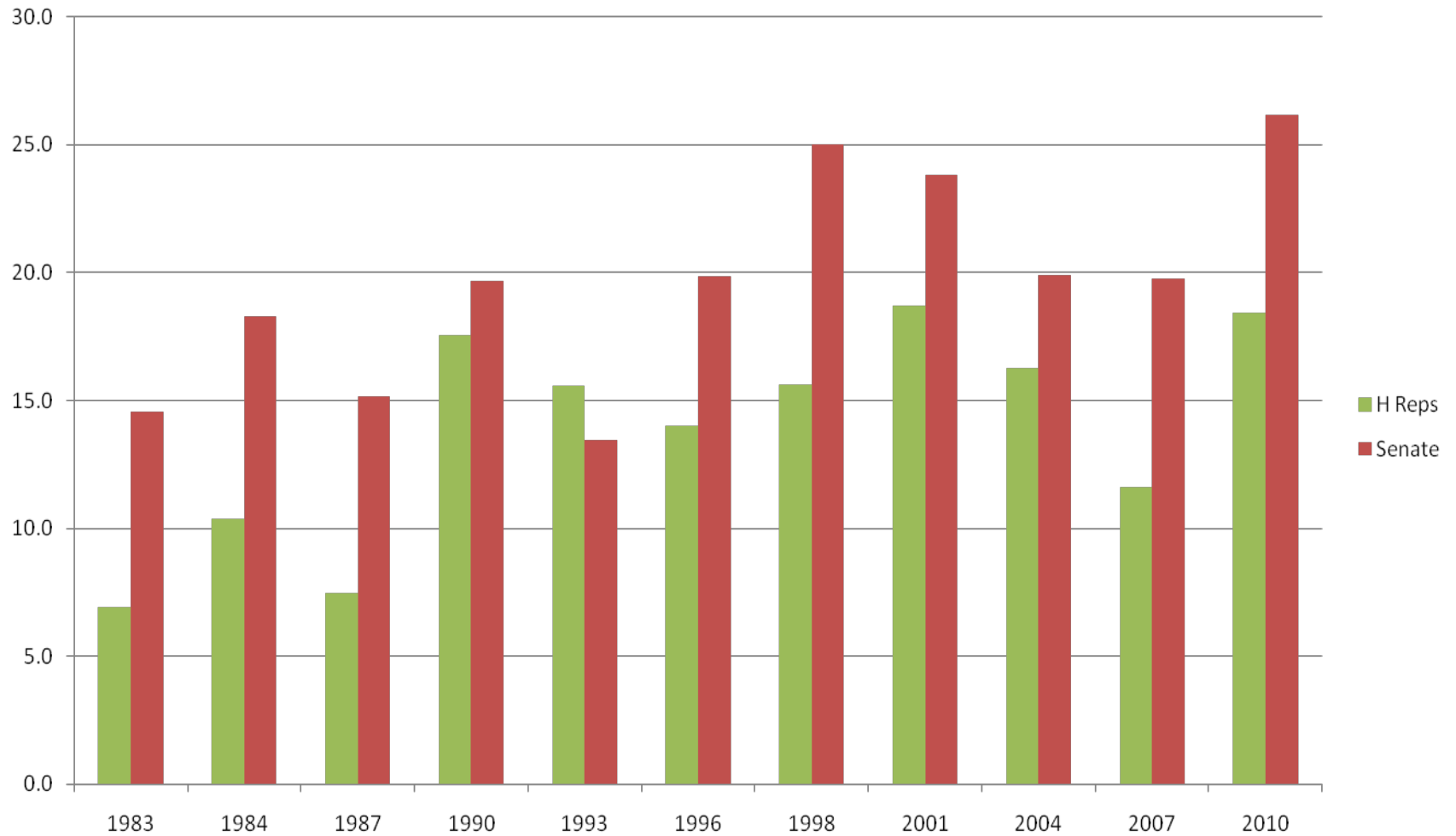
Politics – trends and issues

1. Initiative -> resistance -> consensus:
 - **Economy:** market liberalisation, low tax, low spend, pro-market, growth, jobs
 - **Social:** targeted, means-tested, work-based, equity-focus. Pro-pensions, Medicare, superannuation, maternity leave, NDIS?
2. Importance of voting system
3. Entitlement mentality > gratitude
4. Changing media, fast news cycle, 'gotcha'
5. Cynicism, lack of trust

Non-voting, Informal voting



Minor Party Voting





Social Policy – issues & people

1. NDIS – bipartisan support
2. Gonski – too late?
3. Medicare and health?
4. Housing?
5. Parental leave
6. Federal-State relations (Abbott, Robb)
7. Role of government (Hockey, Andrews):
 - ‘The Age of Entitlement’
 - Prevention and early intervention
 - Specifics: Charities Commission revisions; red tape reduction; funding entitlement cutbacks



Conclusion

1. WA – more of the same
2. Federal – likely change of government
3. Social policy – not likely to be a top priority in the campaign
4. If budget and economy stays sound, then general bipartisanship re welfare system likely to remain.
5. Changes at the margins and to some programs likely
6. Fed-State tensions will continue even with Coalition governments

The Political and Sector Landscape Changing imperatives for community sector leaders

Irina Cattalini
Chief Executive Officer
WACOSS



The Political Landscape

1. Changing political climate
2. Re-assessing & re-asserting roles



Changing Federal Political Climate

- From ‘provider’ to ‘facilitator’ of services
- Small government - ‘Big Society’
- Community sector not seen as “community”
- Government seeking more direct contact with the consumer ‘voice’



Changing Federal Political Climate

- Limited regulation & accountability
- Moving policy & purchasing decisions further away from Government – *risk of less policy rigor, less systemic planning, less accountability for outcomes*



Changing State Political Climate

- Second-term Government with confident majority
- Directions signalled by the new Ministry



Time to Re-assess & Re-assert Roles

Changing political environment requires us to reassess and reassert both:

- *Our role – as community service organisations in civil society, and*
- *Government's role in social services*



Government's Role – in Social Services

Reassess and reassert:

- Policy making
- Funding
- Accountability



The Sector / Services Landscape

1. Funding & Service Reform
2. Regulatory Reform
3. Risk
4. Reassessing and reasserting our role



Funding & Service Reform

- Individualised funding & self-directed services
- Performance-based & ‘innovative’ funding
- Outcomes-based accountability
- Changing service user expectations
for service quality & participation
- Co-design & co-evaluation





CEWA & WACOSS Members Forum

Monday 6th May, KPMG Boardroom

Key issues & implications for Employers of Self Directed Service Design

- **Informative** – find out the key issues for Employers and what others in the sector are doing.
- **Strategic & Structural considerations** – the Forum will help Members create a list of areas to focus on in re-aligning their operations for the changes ahead.
- **Position** - the Forum will assist in shaping CEWA's position



Regulatory Reform

- Charitable status and taxation arrangements
- Fair Work and WA IRC – Pay Equity
- *ACNC Australian Charities and NFP Commission*
- Commonwealth Grant Guidelines
- Delivering Community Services in Partnership



Risk & Future-Proofing the Sector

WA is at risk of more frequent and intense floods, fires and droughts.

Climate Commission latest report - 123 weather records broken in 90 days this summer.

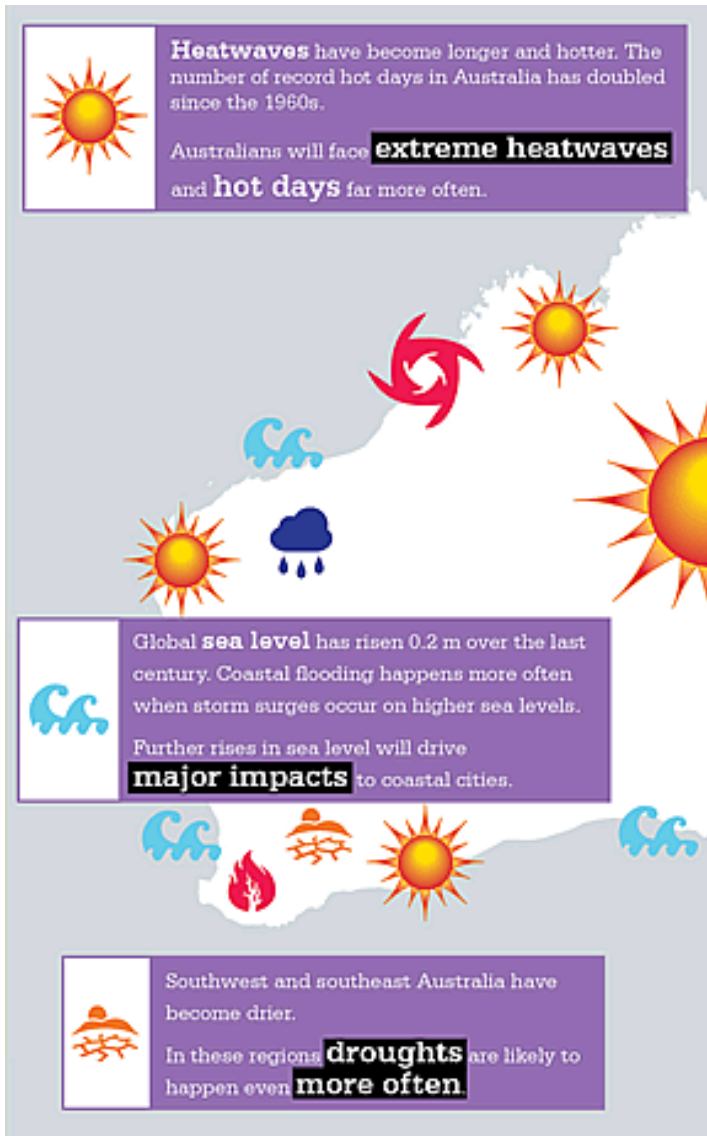
Extreme weather events both threaten community services, and call on us to support communities in crisis.



WACOSS Springboard Seminar Series

Risk & Adaptation – Preparing for Extreme Events

Wednesday 5th June



The infographic features a map of Australia with various weather icons: suns, clouds, rain, wind, and waves. Three text boxes provide key information:

- Heatwaves:** Heatwaves have become longer and hotter. The number of record hot days in Australia has doubled since the 1960s. Australians will face **extreme heatwaves** and **hot days** far more often.
- Sea Level Rise:** Global **sea level** has risen 0.2 m over the last century. Coastal flooding happens more often when storm surges occur on higher sea levels. Further rises in sea level will drive **major impacts** to coastal cities.
- Droughts:** Southwest and southeast Australia have become drier. In these regions **droughts** are likely to happen even **more often**.

Image: Climate Commission, ABC News



Our role in Civil Society

- Time to re-assess and re-assert our role
- Community services or community delivered public services?



Our Role – Community Service Orgs

Reassess and reassert :

- Independence of our mission
- Relationship with service users as consumers
- Accountability – to funders, regulators
& service users



Community Sector Leadership Challenges

As organisation leaders:

1. Engage with extent of reforms, be aware of implications
2. Plan to adapt our organisation (or not), strategic directions to deliver mission in new context
3. Implement change and manage new systems, processes, funding streams, skills and capacity



Community Sector Leadership Challenges

As sector leaders:

1. Driving change and future directions, rather than passively adapting/implementing them
2. Managing roles & relationship with government
3. Positioning our role in civil society with consumers and broader community



Questions



WACOSS

Community Sector

Leaders Panel

Marita Walker, Perth Homecare

Rhonda Adamsam, Spiers Centre

Sue Ash, Uniting Care West

Daniel Morrison, Aboriginal Alcohol and Drug Service

Twitter: #emergingissues @WACOSS

